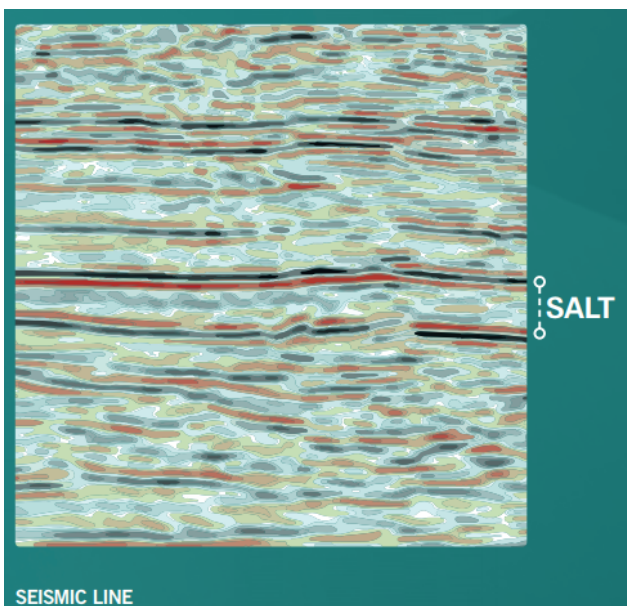
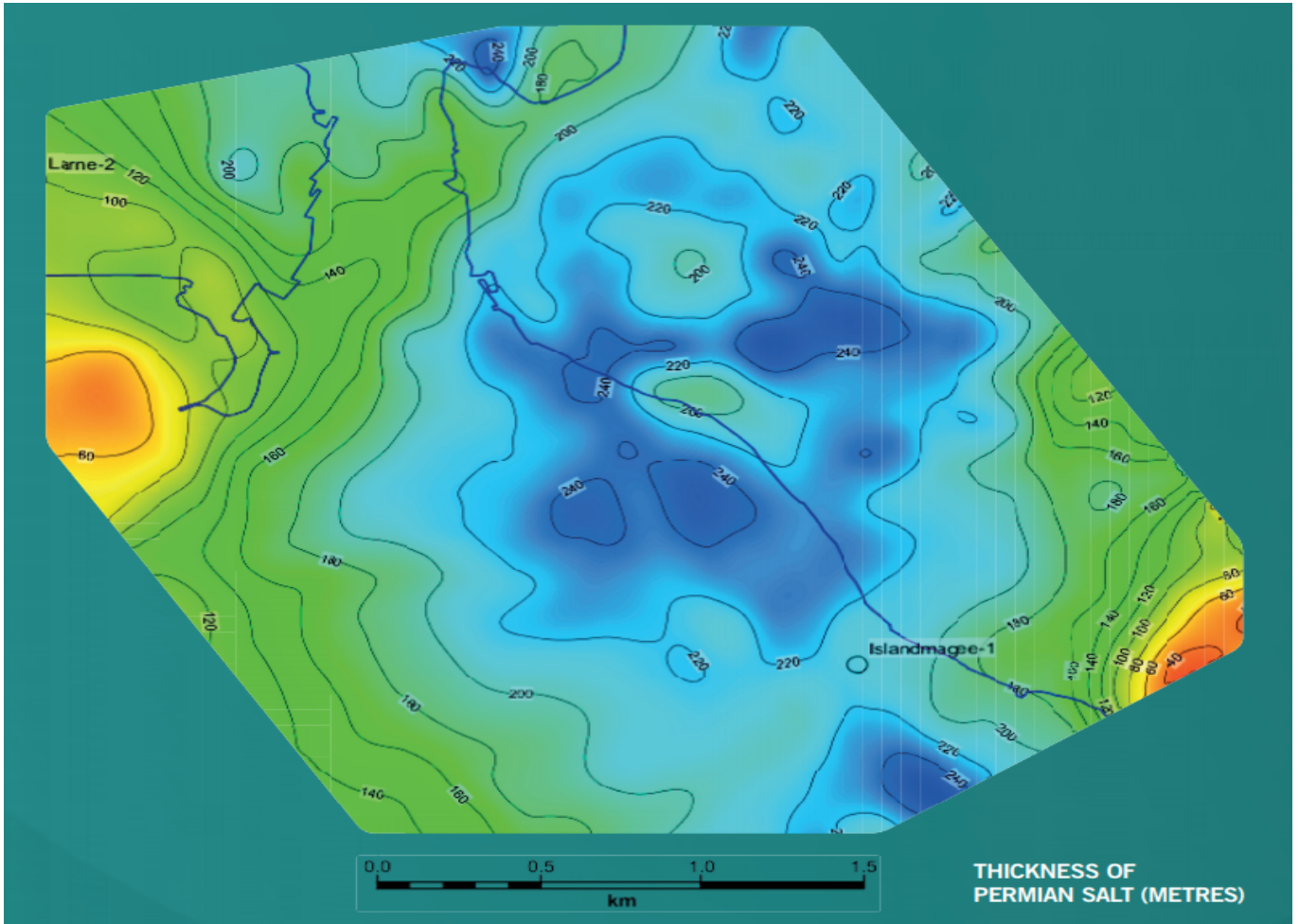


Mapping the Salt



We acquired a 3D seismic survey across Larne Lough and Islandmagee in 2007.

With this data tied to a well drilled in Larne docks in 1981 we are able to image the deep geology and map the thickness of the Permian salt at a depth of 1,500 meters below the Lough.

The Islandmagee-1 well was drilled to intersect the salt below the Lough on the edge of the thick area of salt where future caverns Ph 1 2 caverns and Ph 2 5 Caverns will be constructed

The subsequent analysis of the salt cores from Islandmagee delivered better than expect results well within the regulatory requirements.